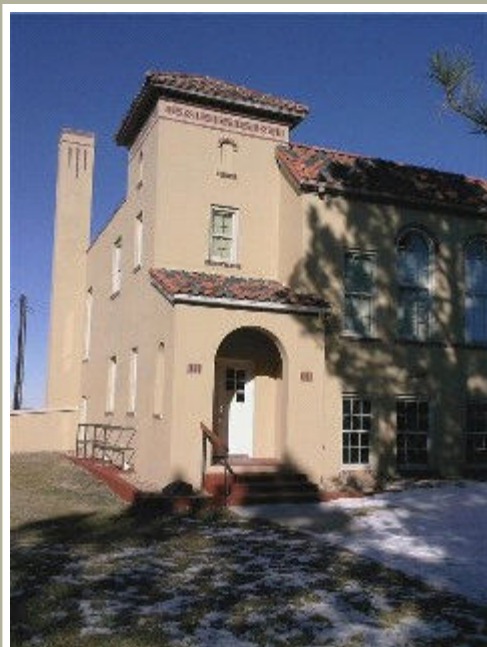


# SMOKY HILL EXPRESS

Elbert County Historical Society & Museum Newsletter

WINTER 2009



A glimpse at the new front doors, painted steps/curbing and completed landscaping.

## FRIENDS OF THE ELBERT COUNTY MUSEUM... HELLO AND HAPPY NEW YEAR!

Our next meeting is **Saturday, January 24, 2009 at 9 AM** in the Museum Office.

On behalf of John, Lucy, Sandy, Carla and myself, thank you for being part of the Elbert County Museum's 2008 Season.

**We couldn't have had a successful year  
without great volunteers like you!**

Until next time –Joe

## 2009 SEASON WORKSHOP

The January 24th meeting will be a brainstorming session for the 2009 Summer Season. Among the proposed projects this year:

- Second phase planning and construction of the museum business district (located upstairs, northeast room)
- Planning, research and construction of the main 2009 exhibit (potential themes/topics)
  - Brands/ Barbed Wire
  - Cemeteries
  - Elbert County Time Line
  - Pioneer Family Biographies

## 2008 SEASON HIGHLIGHTS

What would a new year be without reliving the successes of the prior one? With a new look and lots of **GREAT** volunteers, 2008 was a fantastic year for the museum!

Of course the most anticipated highlight of the year was our Grand Re-Opening over Memorial Day weekend. The traveling exhibit: *"Awakening Stories of Ancient Bison Hunting"* proved to be hugely popular and through our participation with Prairie Development Corporation's *Our Journey* program, the museum was featured in summer tourism promotions statewide!

The annual Pioneer Fourth welcomed a record number turnout again this year!

And numerous building projects, included:

- Finishing basement window installation (bathrooms, boiler room and dog house)
- Painting walls and ceilings in the hallways, stairways, front entrance, Assembly Room, East Room and bathrooms
- A fresh, new look for the Assembly Room and East Room (incorporated a new layout for the furniture, display cases, dioramas and beautifully refinished floors)
- Installing a new sign along Highway 86 (sign was funded in part through Prairie Development Corporation)
- Installing historically, accurate new front doors and hardware
- Unveiling the completely new Gift Shop!
- Unveiling the Elbert Post Office interior storefront (a key component to the future museum business district display)
- Landscaping completed by Andrew DeMaria (for his Boy Scout project)
- Continuation of identifying and cataloging the Museum's collections
- Arranging cataloged items in storage rooms; and
- Properly disposing of hazardous medicines acquired through Dr. Denney's Estate



The *Hanging Tree's* new home in the upstairs hallway.

## SPECIAL THANKS

The Board of Directors would like to recognize everyone who has assisted with the ongoing building renovations which began in the Summer of 2005, together with other projects and including hosts for the 2008 Summer Season and Pioneer Fourth staff.

A special thanks to each individual who has volunteered their time and talents and to those businesses who have provided their professional services. If we have missed naming anyone, we apologize. We couldn't have done it without you!

### INDIVIDUALS

Darrel and Shirley Abbey, Keith Abbey, Eva Adams, Monty Ashliman, Carol Beam, Mary Bolejack, Jonathan Brink, Charlene Brown, Jim Campbell, Angie Clark, Sandy Coleman, Ann Coontz, Andrew and Bob DeMaria, Doris Ehmann, Linda Ehmann, Jim Emig, Roger Evans, Jan Gabehart, Sharon Gabehart, George Gormely, Alexandra, Andrew, Debbie, Katherine and Kylee Harris, Rebecca Hawkins, Henrie and Frona Henson, Betty Hood, John and Lucy Hoffhines, Teresa Jardis, Dan and Judy Kimzey, Katie and Rick Kolm, Roberta Kusma, Annie, David and Ellen Lancaster, Lloyd Link, Carla and Jim Martell, Joe Martell, John and Julie Martell, Debbie Maul, Walt Maul, Beth McNight, John and Sherry Metli, Helena Miller, Margie Mottinger, Brett Murray, Kurt Naber, Verana Nelson, Nina Mae Ohlson, Raymond Olson, Nancy Orth, Sylva Pemberton, Diane Phillips, Cecil and Phyllis Pugh, Betty Railsback, Marta Railsback, Charlene Reed, Donna Reese, Jamie, Lucas and Mathew Robinson, Jeff Salmon, Judy Shue, Barbara Sjaastad, Hank and Donna Smith, Dick and Karen Wehrman

### BUSINESSES

AAC Enterprises, Inc. (Allen Crippen), A Custom Hand Plaster, Inc. (Alan Fraker), D&B Flatwork (Dennis and Barbara Jantz), Elbert County Commissioners, High Plains Electrical (Eric Wilcox), Home Depot-Castle Rock (Patti Knudson), Revive Home Services, Inc. (Jim Frase), Visual West (Rand Hood), The Wall Rebuilder (Dan and Laura Pino), Wecker Farms (Rick Wecker), White Hall Painting (Jim White), Chuck Wiley, Wood Detail Shop (Darrell and Sandy Crist)

## MISSION STATEMENT

To record and maintain the history of Elbert County, Colorado from the earliest settlement.

To work for the establishment of appropriate vaults and archives for the preservation of original manuscripts, documents, photographs and artifacts which may come into the possession of the Society.

To maintain, preserve and house the above stated articles in the Elbert County Museum.

## ELBERT COUNTY HISTORICAL SOCIETY

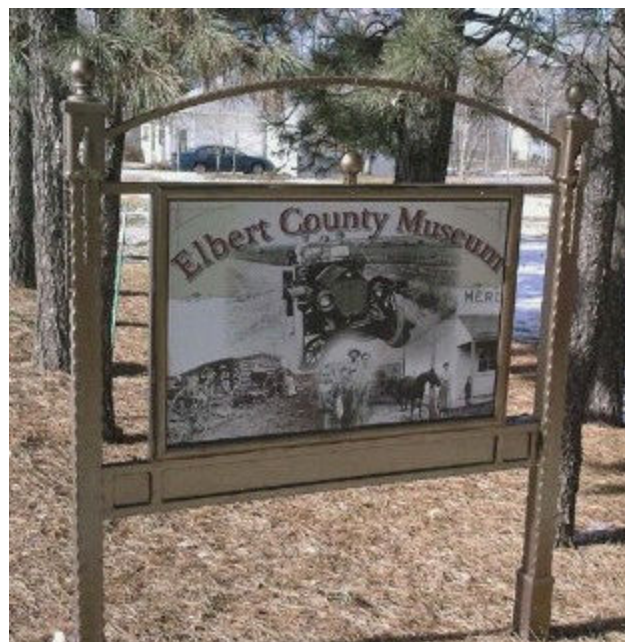
515 Comanche Street  
PO Box 43  
Kiowa, Colorado 80117

[www.elbertcountymuseum.org](http://www.elbertcountymuseum.org)

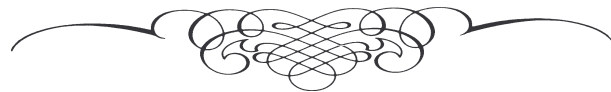


## PIONEER FOURTH

Planning for the Pioneer Fourth is just around the corner. This has become a great family event in which the entire community has grown to expect and equally so it's our biggest fundraiser. In the coming weeks, we need to start discussing plans and making preparations for this year's festivities. This is our **10th Annual** and it seems like each year we learn more about what works and what doesn't.



The new sign (designed by Visual West -Rand Hood) was made possible through a matching funds program with Prairie Development Corporation. Rand also designed the new Gift Shop.



## THANKS AGAIN FOR A PRODUCTIVE 2008!

As we look forward to the next couple months, please feel free to contact one of us if any project sounds like something you would be interested in or if you know someone that would like to get involved, bring 'em along!

## CONTACT US

Sandy Coleman	303.621.8761
John and Lucy Hoffhines	303.646.5683
Carla Martell	303.621.2229
Joe Martell	720.284.1462